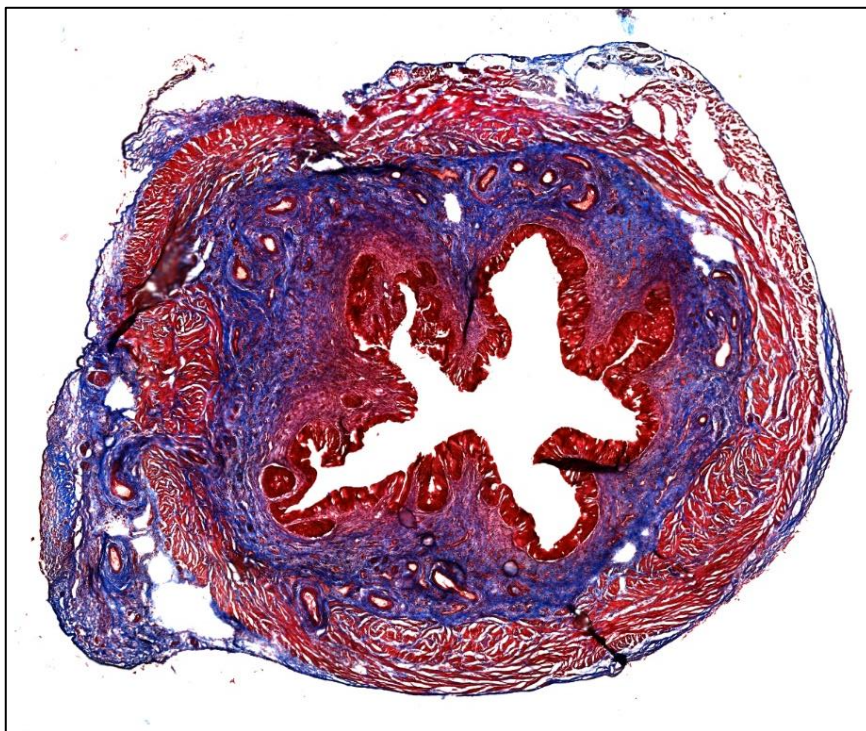


Diploma Thesis

The “point of no return” in bladder dysfunction: When macrophages infiltrate

Establishing methodology for extracellular matrix quantification



Andrea Mathys, BMA 17-20A

Submitted to the College of Higher Education

medi | Center of medical education | Educational Program for Biomedical Scientists

Urology Research Laboratory
Functional Urology Group
Department for BioMedical Research
University of Bern

Bern, 8th June 2020