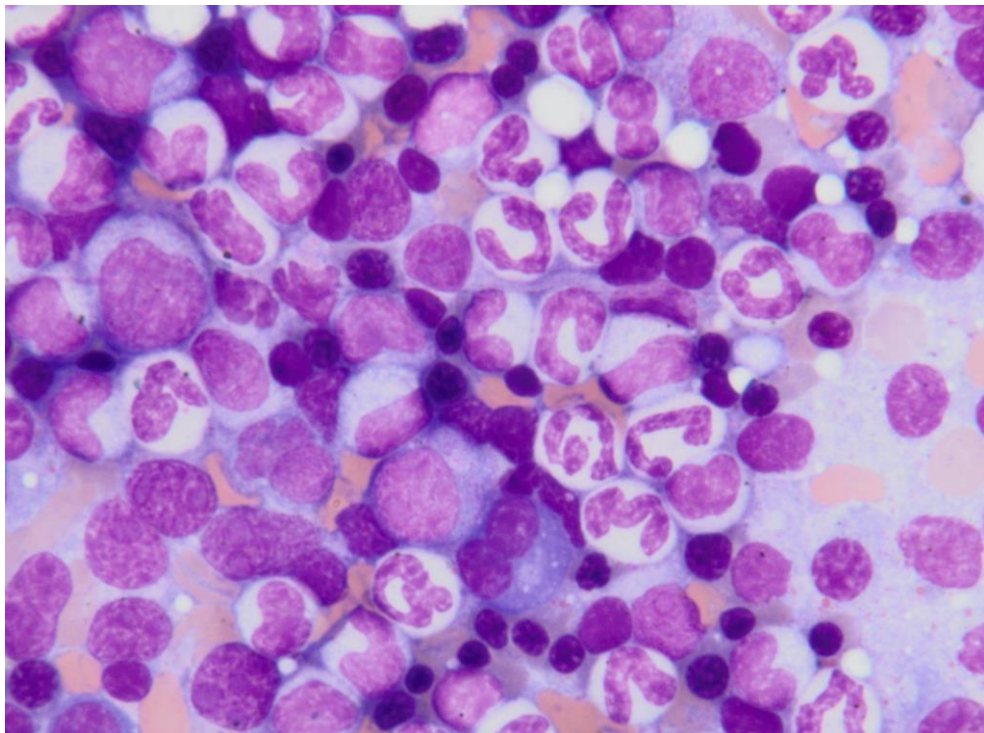


Diploma thesis

Light microscopic morphology of bone marrow cells of beagle dogs

A photographic atlas of cells from bone marrow smears



Noemi Maurer, BMA 17-20 B

Submitted to the College of Higher Education
medi | Center of medical education | Educational Program for Biomedical Scientists

Institute, Department: AnaPath Services GmbH

Bern, 08.0.2020