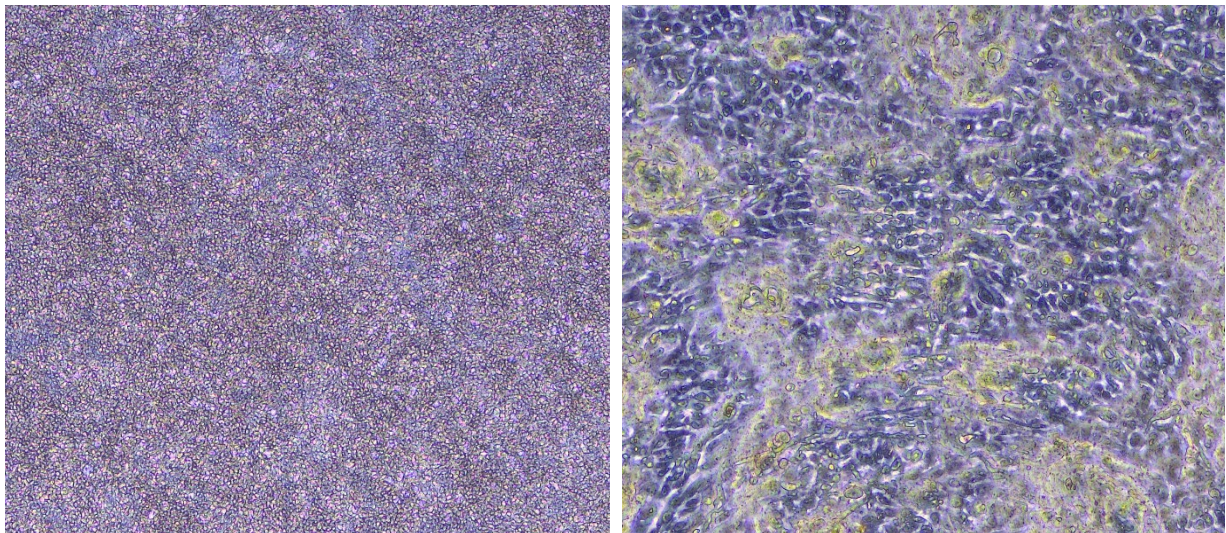


Diploma thesis

Comparing the influence of different culture media compositions regarding the responsiveness in human nasal epithelial cells



Jana Janelle Rohrer, BMA 22-25

Submitted to the College of Higher Education

medi | Center of medical education | Educational Program for Biomedical Scientists

University of Bern, Department for BioMedical Research: Lung Precision Medicine

Berne, 26.06.2025